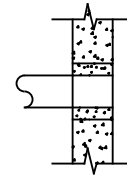


4' DIA X 3' TALL DRYWELL

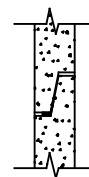
A3

MORTAR BY CONTRACTOR

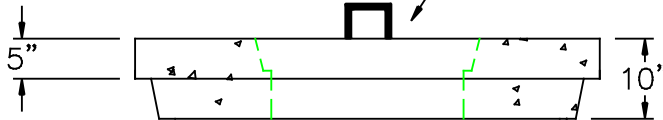


B

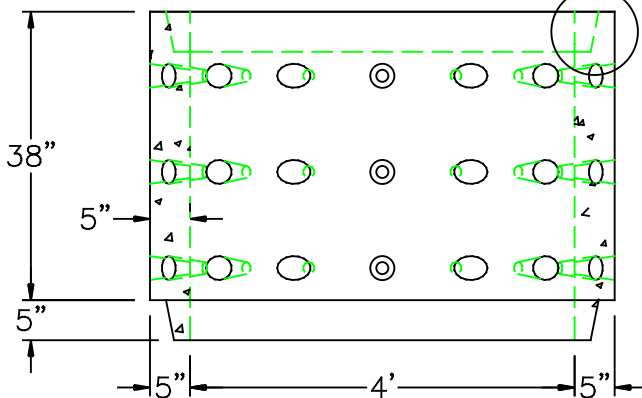
BUTYL RUBBER SECTION JOINT



REMOVABLE PLUG 24" DIA.



SEE DETAIL B
TYPICAL JOINT



| CAPACITY (GAL. PER FT.) | WEIGHT (PER VERT. FT.) |
|----------------------------|---------------------------|
| 93.96 | 865 lbs. |

DESIGN NOTES:

1. MANUFACTURED TO MEET OR EXCEED: ASTM C-478 & AASHTO M 199 SPECS.
2. CONCRETE = 4,000 PSI. MINIMUM CEMENT PER ASTM C-478 (6.1)
3. REINFORCED STEEL COMFORMS TO LATEST ASTM A 185 SPECIFICATIONS.
0.12 SQ. IN / LINEAL FT. AND 0.12 SQ. IN (BOTH WAYS) BASE BOTTOM
4. STEEL REINFORCEMENT TO MEET OR EXCEED AASHTO HS-20 LOADING
5. BUTYL RUBBER JOINT SEALANT PER ASTM C-990 & ASHTO M-198



NPCA

Precast ... The Concrete Solution.



**SCITUATE
COMPANIES**

SCITUATE RAY PRECAST
120 CLAY PIT ROAD
MARSHFIELD, MA 02050
PHONE # 1-800-440-0009
FAX # 781-837-4320

CONTRACTOR:

JOB NAME:

DATE:

DRAWING: SRP-DW43S-FT

DRAWING BY: C.J. SCOTT

WWW.SCITUATECOMPANIES.COM