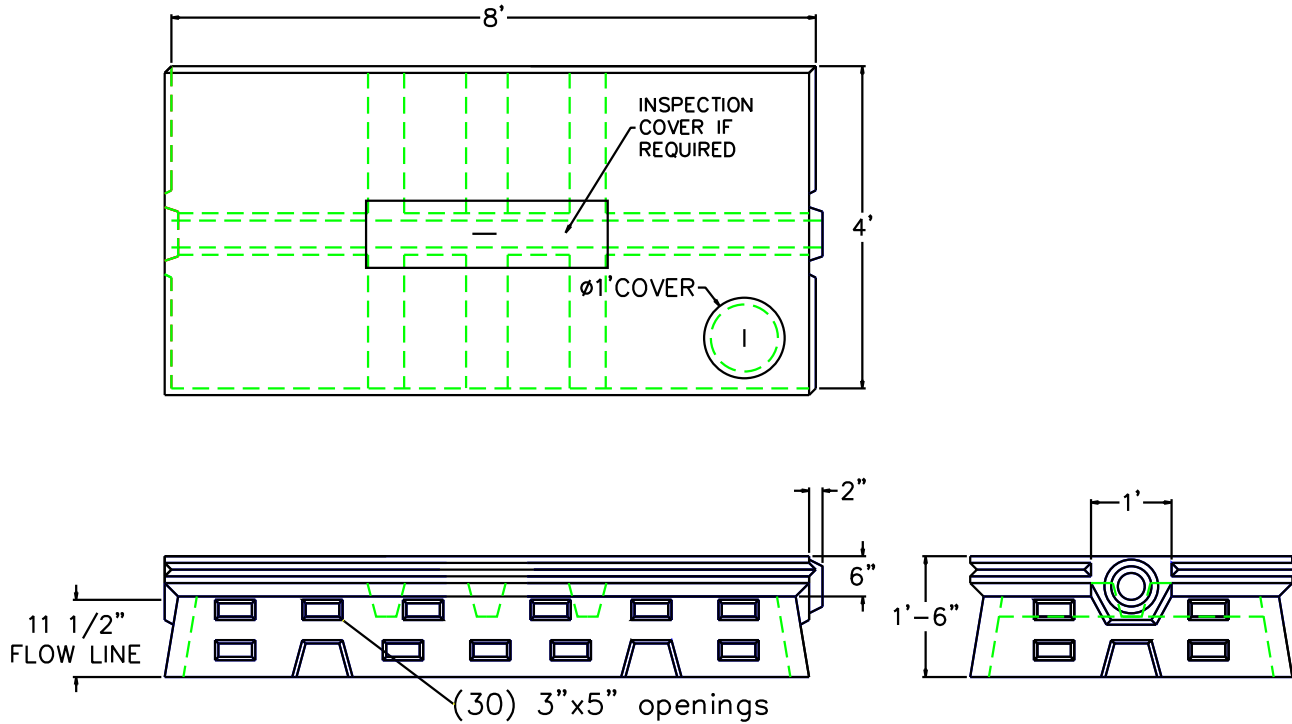


# 4' X 8' FLOWDIFFUSER TYPE-L



## DESIGN NOTES:

1. CONCRETE STRENGTH 4,000 PSI @ 28 DAYS
2. STEEL REINFORCEMENT PER ASTM A-615. GRADE-60
3. DESIGN LOADING PER AASHTO HS-20 WITH 12" TO 60" OF COVER.

WEIGHT CHART		LEACHING DATA			
PRODUCT	APPROX WEIGHT	FLOW LINE (INCHES)	LEACHING (GAL/LF)	LEACHING (FT <sup>2</sup> /UNIT)	INSIDE CAPACITY (GALLONS)
4' X 8' X 1'-6" FLO	2420 lbs.	12	6.2	49.6	240



SCITUATE RAY PRECAST  
 120 CLAY PIT ROAD  
 MARSHFIELD, MA 02050  
 PHONE # 1-800-440-0009  
 FAX # 781-837-4320

CONTRACTOR:

JOB NAME:

DATE:

DRAWING: SRP-FLO-L

DRAWING BY: C.J. SCOTT

