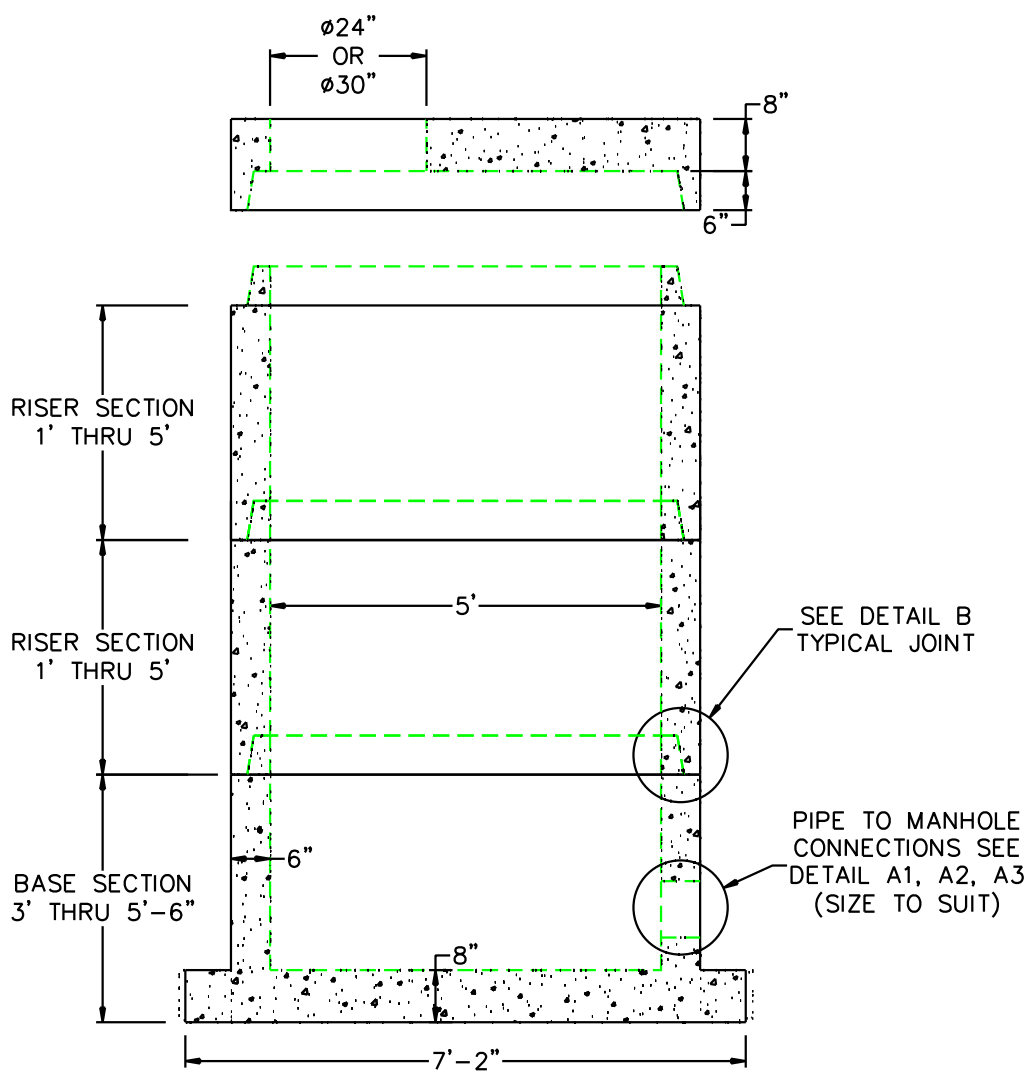


5' DIA EXTENDED BASE SEWER MANHOLE



A1	COMPRESSION GASKET (CAST IN)	
A2	FLEXIBLE SLEEVE	
A3	MORTAR BY CONTRACTOR	
B	BUTYL RUBBER SECTION JOINT	
C	POLYPROPYLENE MANHOLE STEPS	

	FLOOR	VERT. FT	FLAT TOP
WEIGHT	2,400 lbs.	1,300 lbs.	2,840 lbs.
VOLUME		146.8 gal.	

- DESIGN NOTES:
1. MANUFACTURED TO MEET OR EXCEED: ASTM C-478 & AASHTO M 199 SPECS.
 2. CONCRETE = 4,000 PSI. MINIMUM CEMENT PER ASTM C-478 (6.1)
 3. REINFORCED STEEL COMFORMS TO LATEST ASTM A 185 SPECIFICATIONS. 0.15 SQ. IN / LINEAL FT. AND 0.15 SQ. IN (BOTH WAYS) BASE BOTTOM
 4. STEEL REINFORCEMENT TO MEET OR EXCEED AASHTO HS-20 LOADING
 5. MANHOLE STEPS MEET LATEST OSHA REGULATION 29 CFR1910.27, SECTION 16 OF ASTM SPECIFICATION C478 AND SECTION 10 OF ASTM SPECIFICATION C497
 6. BUTYL RUBBER JOINT SEALANT PER ASTM C-990 & ASHTO M-198
 7. ONE POUR MONOLITHIC BASE



SCITUATE RAY PRECAST
 120 CLAY PIT ROAD
 MARSHFIELD, MA 02050
 PHONE # 1-800-440-0009
 FAX # 781-837-4320

CONTRACTOR:		JOB NAME:	
DATE:	DRAWING: SRP-SMH5-EB	DRAWING BY: C.J. SCOTT	