

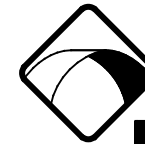


SCITUATE RAY PRECAST
 120 CLAY PIT ROAD
 MARSHFIELD, MA 02050
 PHONE # 1-800-440-0009
 FAX # 781-837-4320

CONTRACTOR:		JOB NAME:	
-------------	--	-----------	--

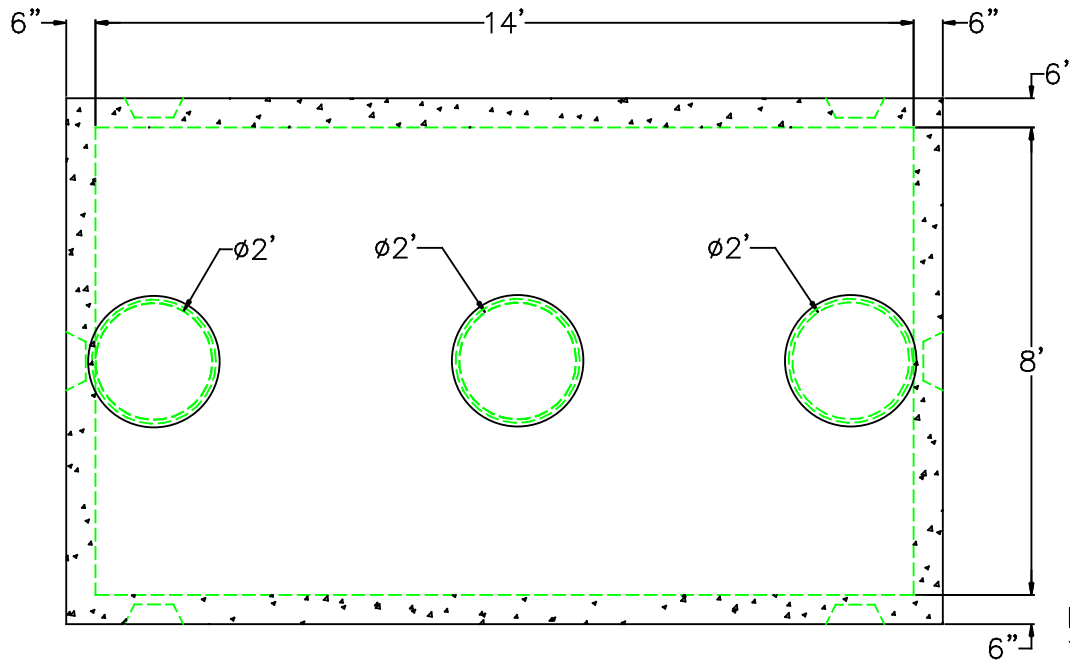
DATE:	DRAWING: SRP-GT4K	DRAWING BY: C. J. SCOTT
-------	-------------------	-------------------------

4,000 GALLON GREASE TRAP



NPCA

Precast ... The Concrete Solution.



	FLOOR	VERT. FT	FLAT TOP
WEIGHT	10,000 lbs.	3,400 lbs.	13,000 lbs.
VOLUME		838 gal.	

DESIGN NOTES:

1. CONCRETE 5,000 PSI. @ 28 DAYS
2. HS-20-44 LOADING WITH 12" - 60" OF COVER
3. REINFORCING ASTM A-615 GRADE 60
4. CONST. JOINT TO HAVE MIN. 1" BUTYL SEALANT
5. EXTERIOR BITUMINOUS COATING AS REQUIRED

— KNOCK OUTS FOR 6" OR 8" INLET/OUTLET

