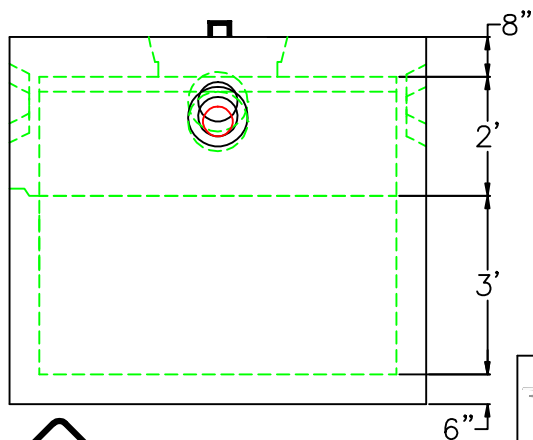
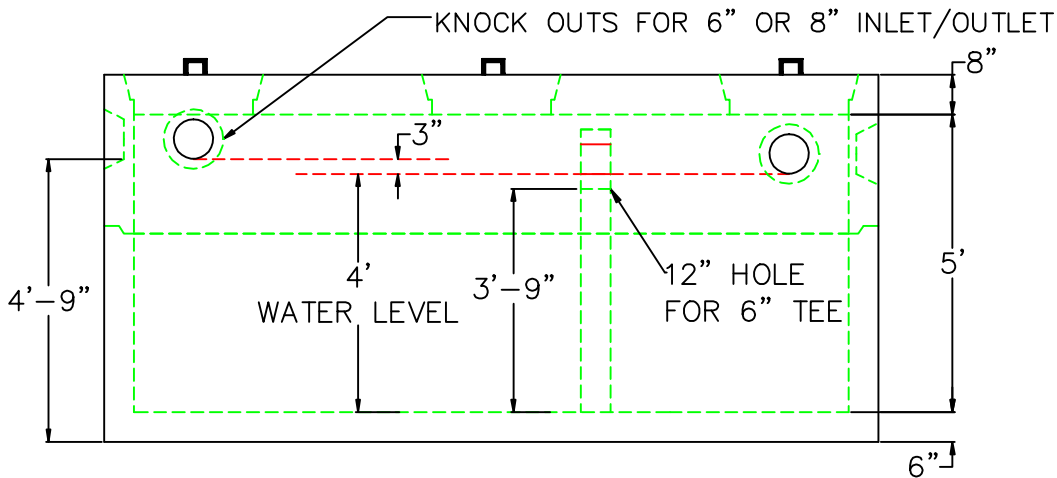
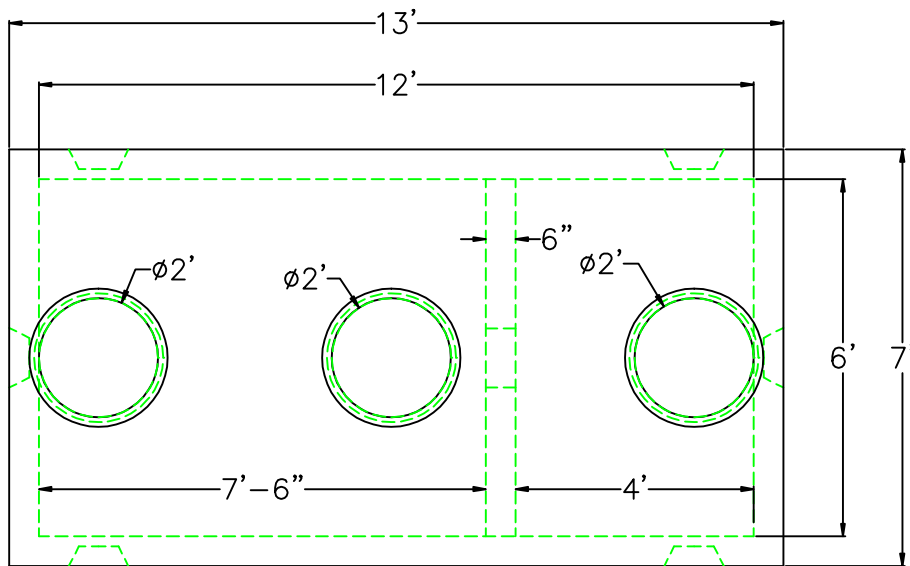


2,000 GALLON TWO COMPARTMENT TANK



DESIGN NOTES:

1. CONCRETE 5,000 PSI. @ 28 DAYS
2. HS-20-44 LOADING WITH 12" - 60" OF COVER
3. REINFORCING ASTM A-615 GRADE 60
4. CONST. JOINT TO HAVE MIN. 1" BUTYL SEALANT
5. EXTERIOR BITUMINOUS COATING AS REQUIRED

	FLOOR	VERT. FT	FLAT TOP
WEIGHT	6,700 lbs.	2,800 lbs.	8,700 lbs.
VOLUME		539 gal.	



NPCA
Precast ... The Concrete Solution.



SCITUATE RAY PRECAST
120 CLAY PIT ROAD
MARSHFIELD, MA 02050
PHONE # 1-800-440-0009
FAX # 781-837-4320

CONTRACTOR:

JOB NAME:

DATE: 4/20/2018

APPROVED BY:

DRAWING BY: JOHN KASPER

2,000 GALLON TWO COMPARTMENT TANK