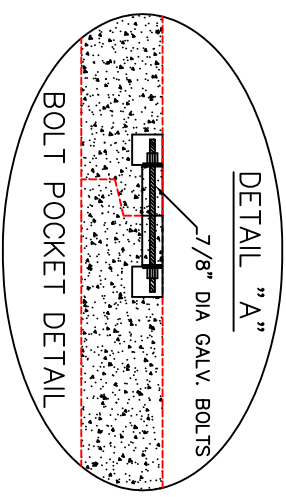
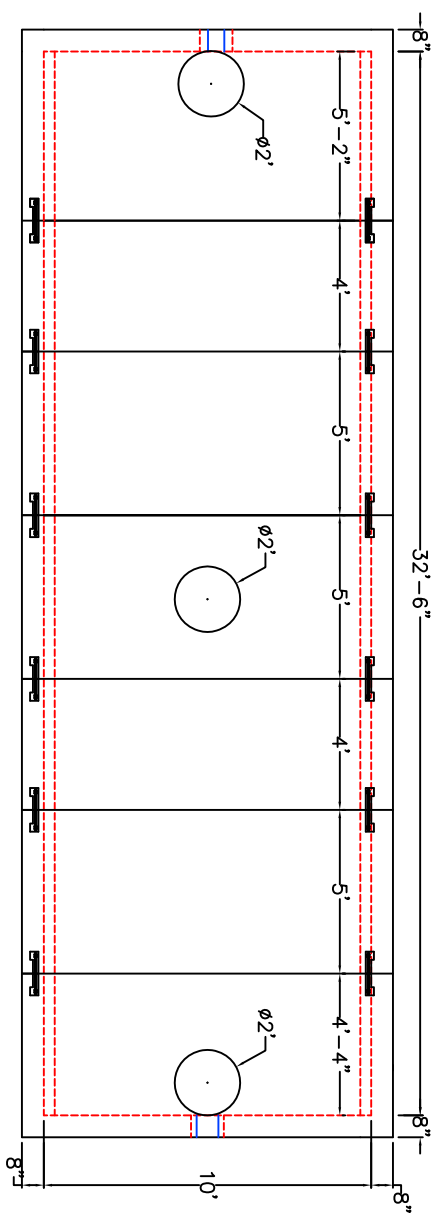




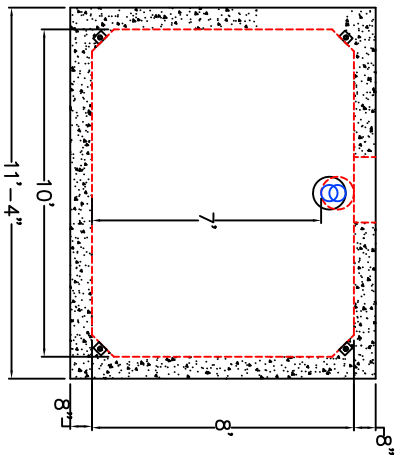
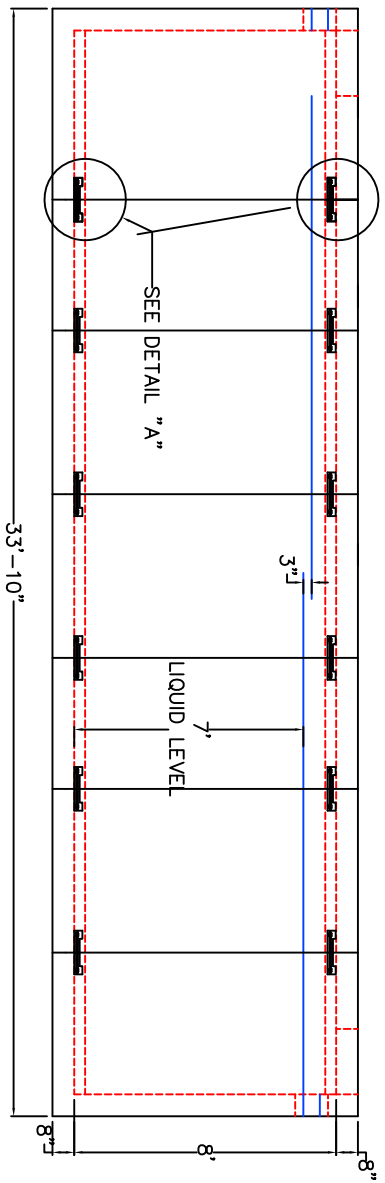
120 CLAY PIT ROAD
 MARSHFIELD, MA 02050
 PHONE # 1-800-440-0009
 FAX # 781-837-4320

- DESIGN NOTES:
1. CONCRETE 5,000 PSI @ 28 DAYS
 2. REINFORCING ASTM A-615 GRADE 60 #5 REBAR 12" O.C.B.W. OR EQUAL
 3. STRUCTURE DESIGNED FOR H-20 LOADING WITH 18" TO 5' OF COVER
 4. SEE CONDITIONS SHEET FOR PROPER SITE PREPARATION

CONTRACTOR:		JOB NAME:	
DATE:	APPROVED BY:	DRAWING BY:	C. J. SCOTT
17,000 GALLON SINGLE COMPARTMENT H-20 TANK			



MPCMA
 Precast ... The Concrete Solution.



APPROVED FOR PRODUCTION BY _____ DATE _____