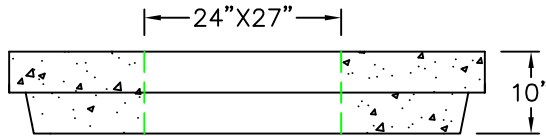
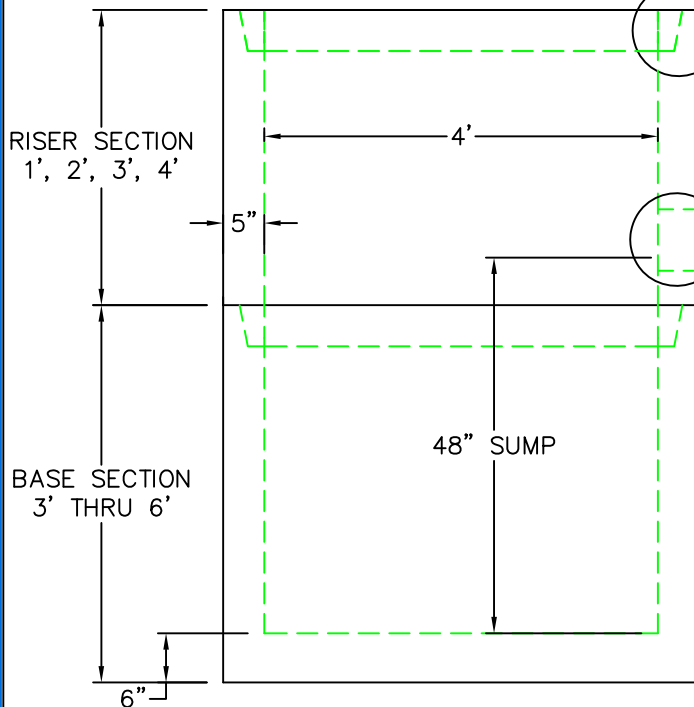


4' DIA CBCI CATCH BASIN

FLAT TOP AASHTO HS-20 LOADING



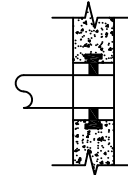
SEE DETAIL B
TYPICAL JOINT



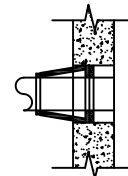
PIPE TO MANHOLE
CONNECTIONS SEE
DETAIL A1, A2, A3
(SIZE TO SUIT)

	FLOOR	VERT. FT	FLAT TOP
WEIGHT	930 lbs.	875 lbs.	1,500 lbs.
VOLUME		94 gal.	

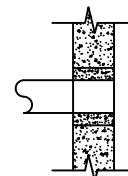
A1
COMPRESSION
GASKET (CAST IN)



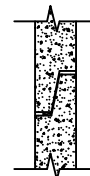
A2
FLEXIBLE
SLEEVE



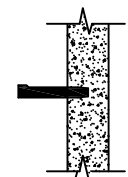
A3
MORTAR BY
CONTRACTOR



B
BUTYL RUBBER
SECTION JOINT



C
POLYPROPYLENE
MANHOLE STEPS
12" O.C.



DESIGN NOTES:

1. MANUFACTURED TO MEET OR EXCEED: ASTM C-478 & AASHTO M 199 SPECS.
2. CONCRETE = 4,000 PSI. MINIMUM CEMENT PER ASTM C-478 (6.1)
3. REINFORCED STEEL COMFORMS TO LATEST ASTM A 185 SPECIFICATIONS. 0.12 SQ. IN / LINEAL FT. AND 0.12 SQ. IN (BOTH WAYS) BASE BOTTOM
4. STEEL REINFORCEMENT TO MEET OR EXCEED AASHTO HS-20 LOADING
5. MANHOLE STEPS MEET LATEST OSHA REGULATION 29 CFR1910.27, SECTION 16 OF ASTM SPECIFICATION C478 AND SECTION 10 OF ASTM SPECIFICATION C497
6. BUTYL RUBBER JOINT SEALANT PER ASTM C-990 & ASHTO M-198
7. WATER PROOFING PER CONTRACT SPECS. AS REQUIRED



SCITUATE RAY PRECAST
120 CLAY PIT ROAD
MARSHFIELD, MA 02050
PHONE # 1-800-440-0009
FAX # 781-837-4320



CONTRACTOR:

JOB NAME:

DATE:

DRAWING: SRP-CBCI4

DRAWING BY: C.J. SCOTT