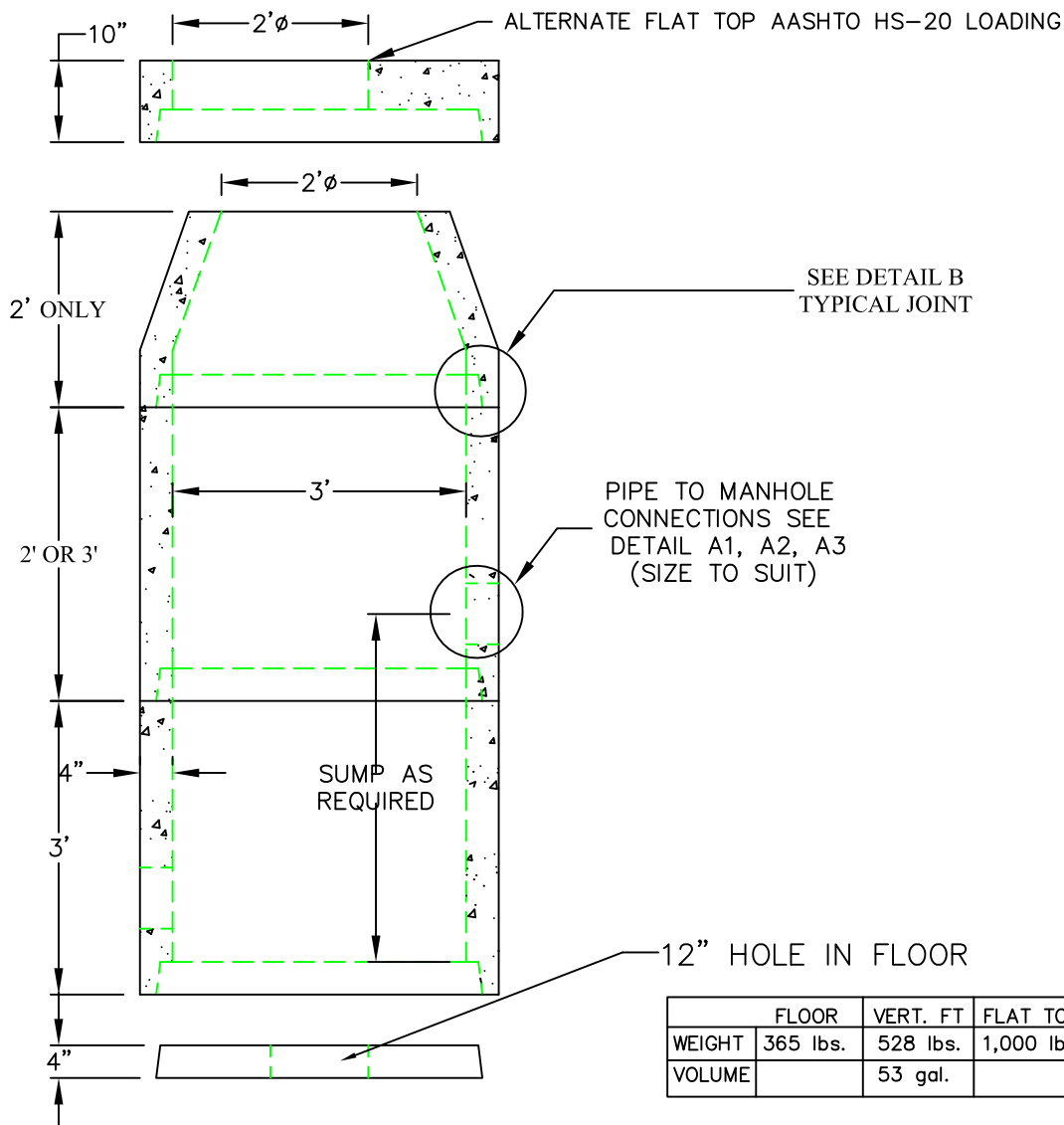
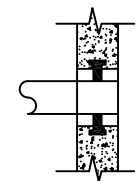


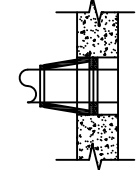
3' DIA CATCH BASIN



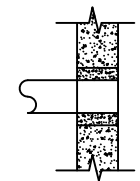
A1
COMPRESSION GASKET (CAST IN)



A2
FLEXIBLE SLEEVE



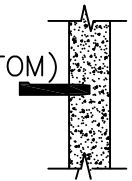
A3
MORTAR BY CONTRACTOR



B
BUTYL RUBBER SECTION JOINT



C
POLYPROPYLENE MANHOLE STEPS



PIPE TO MANHOLE CONNECTIONS SEE DETAIL A1, A2, A3 (SIZE TO SUIT)

	FLOOR	VERT. FT	FLAT TOP
WEIGHT	365 lbs.	528 lbs.	1,000 lbs.
VOLUME		53 gal.	

DESIGN NOTES:

1. MANUFACTURED TO MEET OR EXCEED: ASTM C-478 & AASHTO M 199
2. CONCRETE = 4,000 PSI. MINIMUM CEMENT PER ASTM C-478 (6.1)
3. REINFORCED STEEL CONFORMS TO LATEST ASTM A 185 SPECIFICATIONS.
0.12 SQ. IN / LINEAL FT. & 0.12 SQ. IN (BOTH WAYS BASE AND BOTTOM)
4. STEEL REINFORCEMENT TO MEET OR EXCEED AASHTO HS-25 LOADING
5. BUTYL RUBBER JOINT SEALANT PER ASTM C-990 & ASHTO M-198
6. WATERPROOFING PER CONTRACT SPECS. AS REQUIRED



SCITUATE RAY PRECAST
120 CLAY PIT ROAD
MARSHFIELD, MA 02050
PHONE # 1-800-440-0009
FAX # 781-837-4320

CONTRACTOR:		JOB NAME:	
DATE:		DRAWING BY: C.J. SCOTT	

